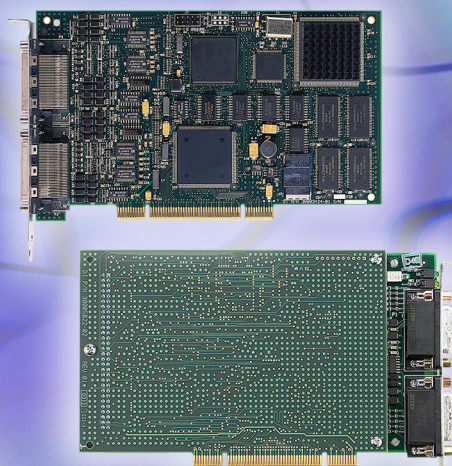
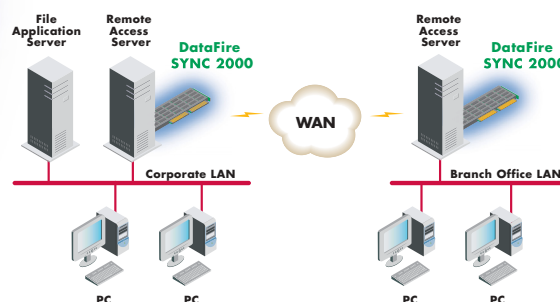


# DataFire® SYNC

Digital WAN Adapters



DataFire SYNC adapters provide remote LAN, WAN and SNA connectivity for PCI servers, which make them ideal for branch offices or central sites where two to sixteen ports are required.



## Features/Benefits

- > Ideal platform for Frame Relay, X.25, SNA and server-based routing
- > Part of the complete Digi line of connectivity solutions for Windows NT/2000/XP
- > Additional operating system support available from third party software partners
- > Two- and four-port models
- > Supports PCI platforms
- > Driver Development Kits (DDKs) available for custom development



## Overview

The DataFire® SYNC family of Wide Area Network (WAN) adapters delivers tightly integrated, synchronous remote connectivity for Windows NT®, Windows® 2000 and Windows XP.

### High-Performance Synchronous Adapters

The DataFire SYNC 2000 family works with PCI based servers running at either 3.3 or 5 volts. Four megabytes of on-board RAM support T1/E1 speeds on all ports in full-duplex mode. Cables are available for V.24, RS-530, RS-449, V.35, V.36 and V.11 interfaces. Each port uses an independent cable, allowing any combination of electrical interfaces to be used. The cable is automatically configured when plugged in to the board, eliminating troublesome configuration options. Each port can report the status of all compliant modem signals and attached cables. Each interface can also measure and report the speed of modems and CSU/DSUs for faster troubleshooting.

### Low-Cost Synchronous Adapters

The DataFire SYNC/570i family of synchronous WAN communication adapters offers a cost-effective solution for LAN-to-LAN, client-to-LAN and client-to-IBM host connectivity. This family is ideal for branch office and enterprise solutions where two to 16 ports per server are required. As a complete hardware and software solution, the DataFire SYNC/570i provides tightly integrated remote LAN connectivity for Microsoft® operating system environments including Windows NT, Windows 2000 and Windows XP. Additional support for other operating systems is offered by our software partners.

Digi provides DataFire development tools to access and control protocols supported by the Digi WAN interface adapters for platform-independent software development.



[www.digi.com](http://www.digi.com)

*Making*  
**DEVICE NETWORKING**  
*easy™*

## Features/Specifications

### FEATURES

#### DataFire SYNC 2000 (PCI)

- Universal PCI
  - 2 or 4 ports supporting up to T1/E1 speeds
  - 25/40 MHz Motorola MPC860 Power QUICC RISC processor (2/4-port)
- 32-bit PCI interface
- 4 MB triple port DRAM
- Independent quad transmit and receive channels
- Surge protection on all data lines
- Internal/external clocking
- Interfaces available for V.11, V.35, V.24 and V.36/RS-449 and RS-530
- UIB automatic interface detection

#### DataFire SYNC/570i (PCI)

- 2 or 4 ports
- Universal PCI
- Software configurable I/O and memory addresses
- Supports 4 DMA channels on 2-port boards; 8 DMA channels on 4-port boards
- Aggregated performance up to 5 Mbps
- Surge protection on all data lines
- Interfaces available for RS-232, V.35, X.21 and V.530
- UIB automatic interface detection

### CERTIFICATIONS

#### DataFire SYNC 2000

- EN55022 Class B
- FCC Part 15 Subpart B
- VCCI V-3/94.04
- AS/NZS 3548
- ICES-003
- EN61000-3-2,3
- EN50082-2
- EN55024
- EN60950
- IEC950
- AS/NZS 3260
- UL1950 3rd Edition
- CSA 22.2
- TS 001
- CTR2
- BSMI

#### DataFire SYNC/570i

- EN55022 Class B
- CISPR 22 Class B
- EN50082-2
- EN60950
- FCC Part 15 Subpart B
- UL1950 3rd Edition
- ICES-003
- CSA 22.2
- Net2

### OPERATING SYSTEMS

#### DataFire SYNC 2000 Family

- Windows NT 4.0
- Windows 2000
- Windows XP

#### DataFire SYNC/570i Family

- Windows NT 4.0
- Windows 2000
- Windows XP
- Third Party X.25, Frame Relay and SNA solutions for UnixWare, OS/2, QNX, Linux and DOS available

### POWER REQUIREMENTS

#### DataFire SYNC 2000 (PCI)

- 1.9 A @ +5 Volts +/-5%, 20 mA @ +12 VDC

#### DataFire SYNC/570i (PCI)

- 1.5 A @ +5 VDC  
0.5 mA @ +3.3 VDC  
90 mA @ +12 VDC

### SOFTWARE FEATURES

- Includes protocol support for Frame Relay, X.25, PPP and SNA
- Easy to use graphical user interface
- Supports IP/IPX routing
- DTE/DCE support
- Supports up to 256 virtual circuits (X.25)
- Full tracking and monitoring functions via GUI diagnostic utility
- BECN and LMI flow control
- Multiple CIR options for transmit
- Supports up to 64 DLCIs per board (Frame Relay)
- Complies with Microsoft's NDIS and WAN Miniport driver specification

### ENVIRONMENTAL

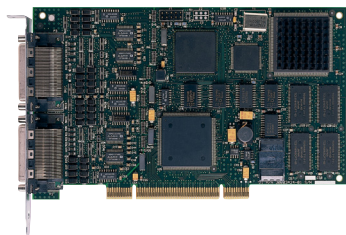
- Operating temperature: 10° C to 55° C (50° F TO 131° F)
- Relative humidity: 5% to 90%
- Altitude: 0 to 3,660 meters (0 to 12,000 feet)

## Features/Specifications

### DIMENSIONS

#### DataFire SYNC 2000 (PCI)

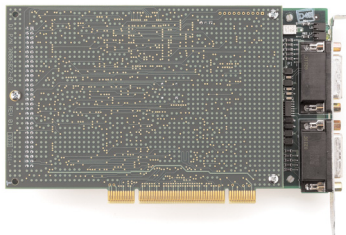
- Length: 4.2 in (10.6 cm)
- Width: 0.5 in (1.27 cm)
- Height: 6.9 in (17.5 cm)
- Weight: 9.0 oz (255.1 g)



### DIMENSIONS

#### DataFire SYNC/570i (PCI)

- Length: 4.2 in (10.7 cm)
- Width: 0.68 in (1.7 cm)
- Height: 7.4 in (18.7 cm)
- Weight: 8.0 oz (210.2 g)



Please contact Digi OEM sales at 800-344-4273 for additional information about driver availability and DDK support.

### MODEL.....PART NUMBERS

#### Model

##### DataFire SYNC 2000 (PCI)

DataFire SYNC 2000 4P PCI

DataFire SYNC 2000 2P PCI

##### Required Cable Options (PCI)

DataFire SYNC 2000 RS-530 Cable

DataFire SYNC 2000 V.11 Cable

DataFire SYNC 2000 V.35 Cable

DataFire SYNC 2000 V.24 Cable

DataFire SYNC 2000 V.36/RS-449 Cable

##### DataFire SYNC/570i (PCI)

DataFire SYNC/570i 2p UIB

DataFire SYNC/570i 4p UIB

##### UIB Cables for DataFire SYNC/570i

DataFire SYNC/570i RS-232 DB-25 Cable

DataFire SYNC/570i X.21 DB-15 Cable

DataFire SYNC/570i RS-530 DB-25 Cable

DataFire SYNC/570i V.35 Cable

#### Worldwide

77000642

77000644

76000425

76000426

76000427

76000428

76000440

77000850

70001895

76000293

76000294

76000369

76000292

## DIGI SERVICE AND SUPPORT

You can purchase with confidence knowing that Digi is here to support you with expert technical support and a strong five-year warranty. [www.digi.com/support](http://www.digi.com/support)

#### Digi International

11001 Bren Road E.  
Minnetonka, MN 55343  
U.S.A.  
PH: 877-912-3444  
952-912-3444  
FX: 952-912-4952  
[www.digi.com](http://www.digi.com)

#### Digi International France

31 rue des Poissonniers  
92 200 Neuilly sur Seine  
PH +33-1-55-61-98-98  
FX +33-1-55-61-98-99  
[www.digi.fr](http://www.digi.fr)

#### Digi International KK

NES Building South 8F  
22-14 Sakuragaoka-cho,  
Shibuya-ku  
Tokyo 150-0031, Japan  
PH +81-3-5428-0261  
FX +81-3-5428-0262  
[www.digi-intl.co.jp](http://www.digi-intl.co.jp)

#### Digi International (HK) Limited

Suite 1703-05, 17/F.,  
K Wah Centre  
191 Java Road  
North Point, Hong Kong  
PH: +852-2833-1008  
FX: +852-2572-9989  
[www.digi.cn](http://www.digi.cn)

#### [www.digi.com](http://www.digi.com)

email:  
[info@digi.com](mailto:info@digi.com)

© 1999-2006 Digi International Inc.

Digi, Digi International, the Digi logo, the Making Device Networking Easy logo and DataFire are trademarks or registered trademarks of Digi International, Inc. in the United States and other countries worldwide. All other trademarks are the property of their respective owners.

91000896  
C1/606

