

# Drop-in Networking Professional Development Kit

## ZB ZigBee Networking Development Kit

Cost-effective, out-of-the-box kit for the evaluation and development of ZigBee wireless sensor/device networks.



## Overview

The Drop-in Networking Professional Development Kit for XBee® ZB provides the hardware and software tools necessary to rapidly deploy a real-world ZigBee sensor/device network. All hardware components are pre-configured to run ZigBee networking software, which is optimized for low-power, battery-fueled operation.

Each development kit includes:

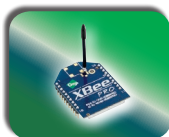
- 2 XBee modules
- 1 ConnectPort™ X4 gateway
- 1 XBee wall router
- Accessories

To see the full range of Digi's Drop-in Networking solutions, including off-the-shelf XBee adapters and cellular/Wi-Fi ConnectPort X gateways, please visit [www.digi.com/products/wirelessdropinnetworking/](http://www.digi.com/products/wirelessdropinnetworking/).

### Related Products



Gateways



Modules



Adapters



Dev Kits

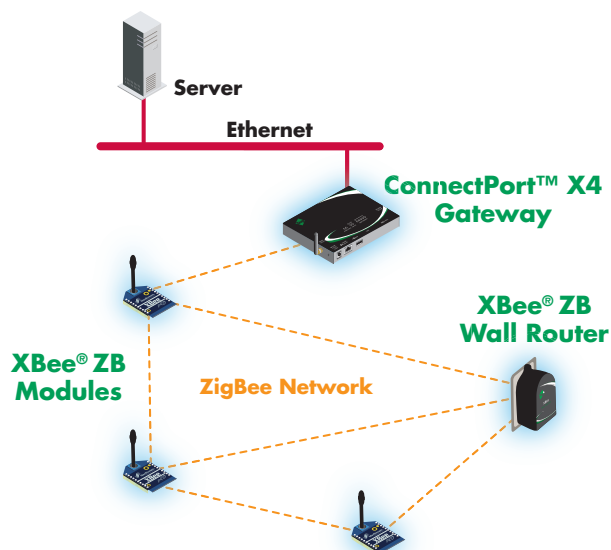


Network Extenders



Sensors

### Application Highlight



### Features/Benefits

- Easily configure a low-power ZigBee sensor/device network
- Conduct a basic wireless range test
- Provide IP connectivity to the ZigBee network using the ConnectPort X4 gateway
- Monitor light and temperature readings from the XBee ZB wall router



Product Type		XBee® & XBee-PRO® ZB Modules	
Model	Regular	PRO	
Performance			
RF Data Rate	250 Kbps	250 Kbps	
Indoor/Urban Range	Up to 133 ft (40 m)	Up to 400 ft (120 m)	
Outdoor/Line-of-Sight Range	Up to 400 ft (120 m)	Up to 1 mile (1.6 km) / Int'l 3200 ft (1 km)	
Transmit Power	1.25 mW (+1 dBm) / 2 mW (+3 dBm) boost mode	50 mW (+17 dBm) / Int'l 10 mW (+10 dBm)	
Receiver Sensitivity (1% PER)	-96 dBm in boost mode	-102 dBm	
General			
Frequency Band	2.4 GHz		
Sleep Modes	Low-power sleep modes enable power-down currents less than 10 uA		
Operating Temperature	-40° C to +85° C (Industrial)		
Product Type		ConnectPort™ X4 Gateway	
General			
Network Protocols	UDP/TCP, DHCP		
Interfaces	Physical: 1 RJ-45 Ethernet port, 1 serial DB-9 port, 1 USB port; RF: 1 XBee-PRO ZB module, 2.4 GHz		
LEDs	Ethernet status, power, XBee link/activity		
Router/Security Features	NAT, port forwarding, access control lists (IP filtering)		
Management	HTTP web interface, password access control, IP service port control, optional secure enterprise management via Digi Connectware® Manager, Python application customization tool for programmability		
Product Type		XBee® ZB Wall Router	
General			
Antenna	Internal		
Locking Mechanism	Unit secures to power outlet using center outlet screw (U.S. only)		
LEDs	Power: Solid when external power is supplied; Associate: Blinks when unit is associated to an RF network		
Push Button	Device reset, configuration reset to factory defaults, identification/commissioning mode		
Integrated Temperature & Light Sensor			
Temperature Sensor	Range: -20° C to +70° C (-4° F to +158° F); Accuracy: +/- 2° C		
Ambient Light Sensor	Range of spectral bandwidth: 360 to 970 nm (similar to human eye); Wavelength of peak sensitivity: 570 nm		
Power Requirements			
Power Input	Universal AC input (85VAC to 265VAC)		
Power Consumption	N/A		

Visit [www.digi.com](http://www.digi.com) for part numbers.

**DIGI SERVICE AND SUPPORT** - You can purchase with confidence knowing that Digi is here to support you with expert technical support and a strong five-year warranty. [www.digi.com/support](http://www.digi.com/support)

**Digi International**  
877-912-3444  
952-912-3444  
[info@digi.com](mailto:info@digi.com)

**Digi International  
France**  
+33-1-55-61-98-98  
[www.digi.fr](http://www.digi.fr)

**Digi International  
KK**  
+81-3-5428-0261  
[www.digi-intl.co.jp](http://www.digi-intl.co.jp)

**Digi International  
(HK) Limited**  
+852-2833-1008  
[www.digi.cn](http://www.digi.cn)



91001512  
A1/209

**BUY ONLINE • [www.digi.com](http://www.digi.com)**

© 2009 Digi International Inc.  
Digi, Digi International, the Digi logo, the When Reliability Matters logo, ConnectPort, Digi Connectware, XBee and XBee-PRO are trademarks or registered trademarks of Digi International Inc. in the United States and other countries worldwide. All other trademarks are the property of their respective owners.

